



Information about the RTS presentation at the 8th CEBC

(8. Biomassekonferenz in January 2026, Graz, Austria)

on the subject

Energy optimization of biomass with innovative RTS drying technology

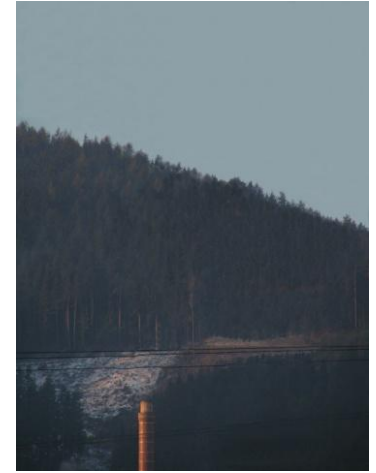
- 1 Energy optimization of biomass**
- 2 Steam plumes and CO2 emissions**
- 3 RTS - large drying systems with drying blocks**
- 4 RTS-E40 dehumidifier – COP >11**
- 5 RTS - Wood Chip Pilot Test 2003**
- 6 Water extraction: 5,400 liters by the Pilot Test**
- 7 RTS devices in use**
- 8 Forage optimization with RTS**
- 9 Effects of RTS drying**
- 10 CO2 reduction through RTS wood chip drying**
- 11 Determinazione del COP of RTS-E40 and
486 kWh / m3 moist wood chips - Proof**
- 12 GHG bonus (greenhouse gas quota)**
- 13 Electricity and heat potential in Austria
20 MW power plant \approx 10 wind turbines (30 MW)
Wood diesel for every diesel engine**
- 14 Treatise in English**
- 15 Treatise in Germany**

Energy optimization of biomass with innovative RTS drying technology

currently
moist wood chips



future
90% dry matter wood chips



→
Steam clouds above
chimneys are a sign of
high CO₂ emissions !
Halving CO₂ emissions
through dewatering the chips
with **the innovative,**
highly efficient
RTS drying technology !

Wood drying = wood energy doubling = climate protection

CO₂

Halving the amount of wood

1/2 CO₂



Halving CO₂ emissions

Doubling of usable energy !

1 m³ - damp ≈ ca. 450 - 500 kWh
(486 kWh per m³ from 1.5 Mill. m³ wood chips)

1 m³ - dry ≈ **850 - 1300 kWh**

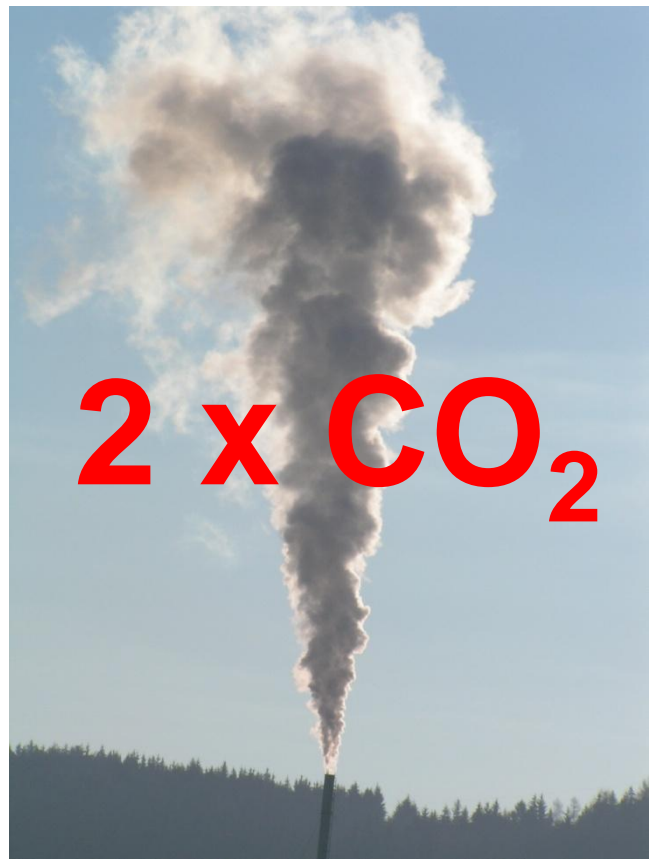
Energy for RTS-drying only approx. 15 kWh

Economic & efficiency, impact and advantages of 90% drought

- **CO₂ reduction: 2,000 t CO₂ per RTS-E40 = climate protection**
- **Halving** of wood purchases, reduction of heating costs
- **Halving** of all upstream processes such as production, handling, machinery use, fuel consumption
- **Conservation** of roads, vehicles and production resources
- **Doubling** of milk yield from forage in cows annually:
3,500 liters → 7,000 liters without concentrated feed

**Steam plumes
are
a sign of
avoidable
CO2 emissions
and of
wood waste
through water
evaporation**

harmful to the climate

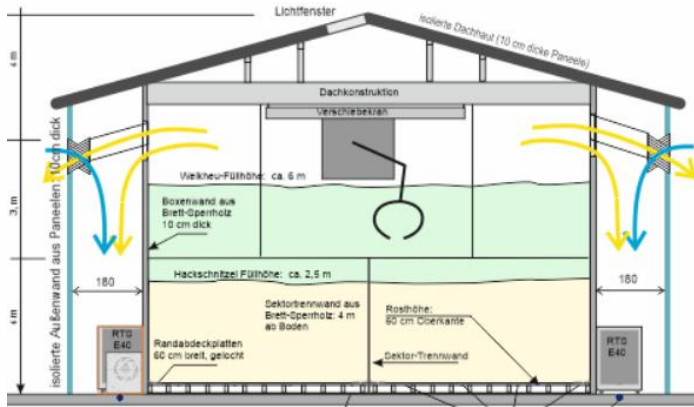


Combustion of moist wood chips compared to 90% dry matter wood chips

- Double the amount of wood
- Double the labor
- Double the machinery use
- Double the handling
- Double the machine wear and tear
- Double the truck traffic
- Double the delivery trips
- Double the fuel consumption
- Double the transport weight
- Double the road wear and tear
- Poor combustion, large amount of ash
- Double the potential hazards
- **Multifaceted losses across multiple economic sectors**
- **Double the CO2 emissions from combustion**
- **Severely profit-destroying and loss-making**
- **Significant economic damage**

Halving of all negative factors through 90% dryness

RTS - large drying systems with drying blocks



RTS drying system for 90% dryness and consistent efficiency

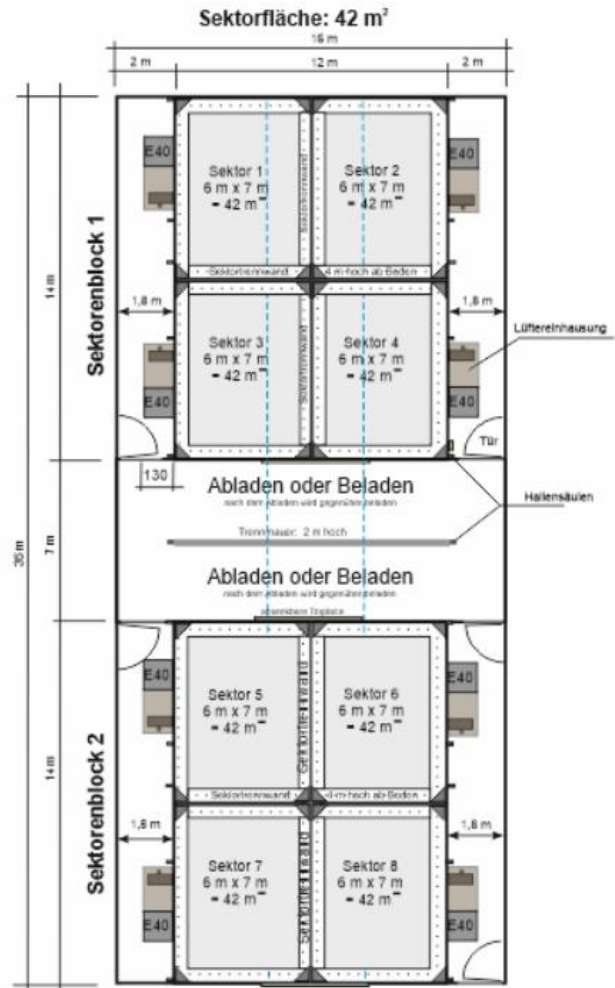
RTS block system, consists of 4 grate sectors, separated by partitions for tactical reasons: daily emptying and refilling of one box when using wood chips

Many sector blocks can be connected in series.

Drying capacity per block:
400 cubic meters of wood chips per week or approx. 130 tons of hay from approx. 44 hectares per week

Power consumption per block: 44 kW

Sector blocks
1 block: 4 RTS devices



2 blocks

2 blocks → annually: 40,000 m³ wood chips → **40 GWh** of heat without RTS drying: only < 20 GWh of heat

Energy gain through RTS: > 20 GWh per 2 sector blocks

RTS-E40 dehumidifier – COP >11

COP = Coefficient of Performance
1 kWel produces > 11 kW of heat
Self development !



Air drying capacity of the RTS - dehumidifier: > 20,000 m³/h
Drying air: < **52% relative humidity** - required to achieve
90% dryness of the biomass and to double the
usable energy of the biomass

Drying capacity of RTS-E40 dehumidifier each

Wood chips per week: 100 cubic meters (m³)
with 90% dryness

Hay per week: about 11 hectares with 90% dryness in 3 stages,
after each stage: 1 day without filling

Electricity consumption: 7,2 kW per RTS-E40 + **3,8 kW** per fan
per week: < **1,800 kWh** with continuous operation of the heat pump.

In sunny weather: Reduction of electricity consumption by 400 kW

Electricity consumption per m³: approx. **15 kWh/m³** wood chips

RTS - Wood Chip Pilot Test 2003 at 0°C

with wood chips from fresh trees including
branches, twigs, needles and bark



drying room →

Closed recirculation mode with
condensate measurement



RTS - K25 (Prototype):

5 kW dehumidifier

2.2 kW fan

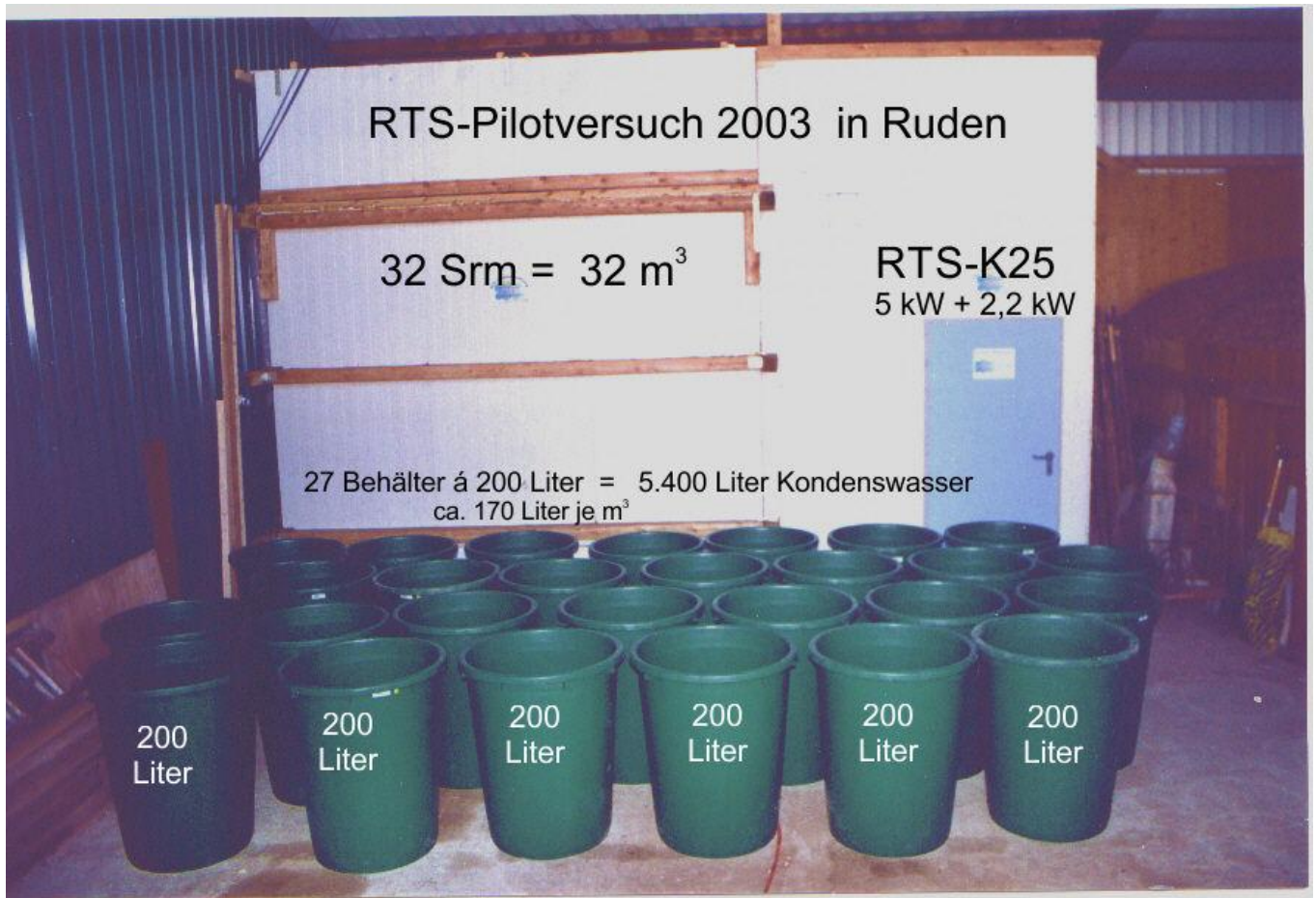
total: 7.2 kW

Condensation:

>30 liters per hour /
constant

RTS - woodchip - pilot test 2003

withdrawn amount of water



Water extraction: 5,400 liters

in 1 week of 32 m³
with a 5 kW dehumidifier

27 condensate containers,
each with a capacity of 200 liters

170 liters per cubic meter
(m³)

Without drying



**Evaporation in the
combustion
chamber**



Energy loss

RTS devices in use



RTS-K40-device series
3 devices

RTS-devices
behind the box

The device series can
be continued.

K40 model series:
RTS - E40 including fan
in one housing = RTS-K40



Grate: 60 cm high
Edge cover
Support: Grid etc.





Forage optimization with RTS drying technology

Milk per cow per year from hay:

with cold ventilation: approx. 3,500 liters/year

with RTS-dried hay: **Doubling of annual milk yield up to 7,000 liters per cow**

Proof: Farmer in Ebbs, Tyrol, Austria

Wilted hay must reach 90% dryness within 3 days ! Only achievable with air at <52% relative humidity in precisely measured quantities –
This is the RTS standard.

Complete avoidance of silage: Milk with high Omega 3 (Ω 3) fatty acid content, also in all dairy products!

Silage feeding: predominantly Omega 6 fatty acids.

Silage milk can contain traces of toxins from animal carcasses in the silage.

Omega 3: for muscle strength and immune defense high CLA content, very healthy...

Omega 6: leads to fat deposits in the human intestine, cause of many diseases...

Significant savings on concentrated feed with RTS dried hay!

Increased income per cow: more than € 1,000 annually

Drying

in the same box,
at different
fill levels and
drying time

Wood chips

2.75 m filling height

Damp hay

after a sunny day
2.5 m filling height
per stage -

Approximately 11 hectares
per week in 3 stages with a
free day in between

Corn

0.5 m filling height

Grain

1 m filling height

Grass seed

0.5 m filling height

Herbs

1.5 m filling height

Doubling the energy of wood chips

instead of
< 500 kWh per m³



**900 – 1,200 kWh
per cubic meter
with 90% dryness**

Doubling of milk yield of forage: Milk per cow

instead of
3,500 liters of milk



**up to 7,000 liters
per cow / annually
only with
90% dry matter hay**

CO2 reduction through RTS wood chip drying

Calculation of CO2 reduction per RTS-E40 dehumidifier

1 RTS-E40 dehumidifier halves the wood consumption compared to burning moist wood chips and therefore also halves CO2 emissions !

CO2 emissions from burning wood, according to WWF:
403 kg CO2 per MWh

Annual CO2 reduction per RTS-E40 dehumidifier with year-round wood chip drying (50 weeks):

Wood savings of approximately 5,000 cubic meters !

Loss avoidance also of approximately 5,000 MWh annually

CO2 calculation: 5,000 MWh annually x 403 kg CO2 = 2,015,000 kg CO2
2,015,000 kg CO2 → approx. 2,000 t CO2

One RTS-E40 dehumidifier prevents approximately 2,000 tons of CO2 annually (50 weeks) !

Entitlement to GHG quota (CO2 compensation) according to the European Emissions Trading System:

Currently (2025) in Austria: € 55 / t CO2 (increasing annually):

2,000 t CO2 x € 55



€ 110,000 per RTS-E40

with year-round wood chip drying (50 weeks)

RTS biomass drying = CO2 reduction
RTS biomass drying = climate protection

Determinazione del COP del deumidificatore RTS-E40

a cura del Dott. Koglbauer

COP: RTS-E40 11.7



COP → Efficiency
 1 kW of electrical input results
 in a heat output of **>11 kW**
 air drying through
 air heating

Relative humidity through
 RTS-E40 **< 51%** rel. H.
 required for
90% product dryness

**RTS-E40: 7.2 kWel →
 approx. 82 kW heat**

EVALUIERUNG DES RTS-TROCKNUNGSVERFAHREN
 Vergleichsrechnung der Zustandspunkte bei reiner Kreislaufführung der Trockenluft

Zustand	Luft trocken	Enthalpie tr. Luft	Feuchte absolut	Enthalpie Wasser	Masse gesamt	Enthalpie gesamt	Enthalpie relativ	Betriebs-Volumen	Temperatur	Relative Feuchte
1	0 kg	0 kJ	0 kg	0 kJ	0 kg	0 kJ	0,0 kJ/kg	0 m³	10,0°C	40,00%
2	24.471 kg	678.210 kJ	287 kg	732.207 kJ	24.758 kg	1.410.417 kJ	57,0 kJ/kg	21.230 m³	27,6°C	51,08%
3	24.471 kg	497.272 kJ	315 kg	799.335 kJ	24.786 kg	1.296.607 kJ	52,3 kJ/kg	20.748 m³	20,2°C	87,12%
4	24.471 kg	497.272 kJ	315 kg	799.335 kJ	24.786 kg	1.296.607 kJ	52,3 kJ/kg	20.748 m³	20,2°C	87,12%
5	24.471 kg	407.418 kJ	287 kg	726.335 kJ	24.758 kg	1.133.753 kJ	45,8 kJ/kg	20.453 m³	16,6°C	100,02%
6	--	--	28 kg	1.944 kJ	28 kg	1.944 kJ	89,4 kJ/kg	--	16,6°C	--

Wärmepumpe		Trocknung	
Lufttemperatur	16,6°C	Luftkubatur	20.740 m³/h
T Verdampfer	14,6°C	Trocknungsdauer	1 h
WP Q zu	274.720 kJ	Druckverlust	7 hPa
Lufttemperatur	27,6°C	Gebäudeleistung	4,0 kW
T Kondensator	30,6°C	therm. WP-Leistung	81,7 kW
WP Q ab	301.164 kJ	Kompressorleistung	7,2 kW
COP	11,39		

Testwerte des RTS-E40 Entfeuchters
 COP (coefficient of performance) =
COP_{RTS-E40} = 84,37 : 7,2 = 11,71
 plausibel



Innovation Prize
 of the Federal State
 of Carinthia / Austria
 2004

Internet: <http://heutrocknung.at/RTS-E40-COP-laut Kelag.pdf>

**Energy from moist wood chips according to
 Kelag information: 486 kWh / m3 wood chips**

<https://web.archive.org/web/20100625061441/http://www.swh.co.at/unternehmen.html>

1,5 Mill. m3 → 600.000 MWh heat + 130 MW el. = 730,000 MWh
 1,500,000 m3 wood chips ;

730,000,000 kWh : 1,500,000 m3 = 486 kWh per m3

GHG bonus (greenhouse gas quota) CO2 reduction bonus for every RTS-E40 dehumidifier

Halving wood consumption with the same heat output using the RTS drying system – **annual CO2 reduction !**

Wood savings per RTS E40: approx. 5,000 cubic meters of wood chips

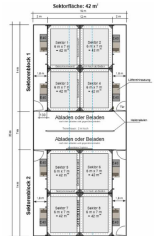
per year (50 weeks) \approx 2,000 cubic meters of wood
approx. **2,000 tons of CO2 reduction per year**

Entitlement to a **greenhouse gas (GHG) premium**
for **2,000 tons of CO2** per RTS E40 each: **> €110,000 per year**



GHG premium per RTS drying station with 8 RTS E40 units:

16,000 tons of CO2 (100 € per t) € 1,600,000 per year



Economic & efficiency, impact and advantages of 90% drought:

- **CO2 reduction: 2,000 t CO2 per RTS-E40 = climate protection**
- **Halving** of wood purchases, reduction of heating costs
- **Halving** of all upstream processes such as production, handling, machinery use, fuel consumption
- **Conservation** of roads, vehicles, and production resources
- **Doubling** of milk yield from forage in cows:
3,500 liters → 7,000 liters without concentrated feed
- **Omega-3** fatty acids from hay feeding in all dairy products:
Improvement of public health, relief for hospitals
- **Extension** of the productive lifespan of cows:
from 2 years → 10 years and more
- **Improvement** of animal health, more meat, less fat,
higher slaughter weight, etc.
- **Improvement** of human health through hay milk

Electricity and heat potential of damaged timber in Austria: 10 million cubic meters annually

10 million m³ of wood \approx **25 million m³ wood chips with 90% dryness at 1000 kWh**

(25 TW 000 GW 000 MW 000 kWh)

approx. 1,000 kWh / m³ chips \rightarrow 25 billion kWh or 25 TWh

25 TWh = 10 TWh electricity + 15 TWh heat

The largest Danube power plant, Altenwörth:
approx. 2 TWh electricity annually

One nuclear power plant generates
approx. 10 TWh of electricity annually

**Energy potential of the damaged wood:
> 2 nuclear power plants**



Rotational woodland – 5 years

approx. 670 m³ per hectare **poplar forest**

approx. 305 t 90% dry matter per hectare

6 km² for a 20 MW power plant,

1.2 km² annual harvest

20 MW power plant \approx 10 wind turbines (30 MW)

70 GWh electricity
and 100 GWh heat

only Electricity : **70 GWh**

Wood diesel for every diesel engine: for cars and trucks

University of Vienna test

4 kg of wood with 90% dryness



1 liter of wood diesel

1 m³ wood with 90% dryness \rightarrow approx. 600 kg \rightarrow approx. 150 liters

1 million m³: approx. 5,000 tanker trucks of 30,000 liters each 13

Energetic biomass optimization with RTS drying stations and integrated highly efficient RTS heat pump

Steam clouds above heating plants are a sign of wood waste and avoidable CO2 emissions, as well as climate damage.

The dewatered wood in the form of **wood chips** can be processed in various ways (heat, wood diesel, gas, etc.), but a high degree of **dryness of 90%** is always required. Dewatering the biomass requires a significant energy input. To minimize the energy input for water removal from biomass, the **RTS Trocknungstechnik GmbH** has developed the **highly efficient RTS heat pump** with its **extremely high efficiency of COP > 11** through years of intensive research. Data analysis from a test has confirmed the COP>11. This **RTS heat pump** is used in the **RTS drying process** for hay and wood chips, which was also developed in-house. The RTS drying process radically reduces energy consumption in biomass dewatering, achieving a **90% dryness level** in the biomass. This type of biomass **doubles the usable energy** compared to less efficient drying methods, and for hay, the milk yield will be doubled, and when burning 90% dry matter of wood chips, only **half the amount of wood is needed for the same heat output** compared to moist wood chips. At the same time, **CO2 emissions** from such heating plants **are halved**, representing **efficient climate protection**. Using 90% dry matter of wood chips in heating systems **halves all upstream processes**: labor and machinery use, handling, deliveries, road wear, traffic, fuel consumption, CO2 emissions etc., with highly positive effects on **climate protection** ! To protect roads and reduce traffic, wood chip drying should take place in decentralized **RTS drying stations** in the harvesting regions immediately after felling. In combined heat and power plants on the outskirts of urban centers, the energy optimized biomass can be converted into **electricity and heat**. When fully dewatered wood chips are burned, there are **no more steam clouds** above the heating plants and the heating system is no longer noticeable from the surroundings.

RTS drying technology requires only **15-20 kWh per cubic meter of wood chips** for dewatering, thus is doubling the usable energy. Drying freshly wood chips with an initial moisture content of 50% (50% dry matter) to a final moisture content of **10%** prevents significant energy losses during storage and combustion. More than **500 kWh** of additional heat are recovered per cubic meter wood chips. Depending on the type of wood, **900 - 1,300 kWh** of heat per cubic meter can be used. The figures published online by one of Austria's largest bioenergy producers, "Heizwerke Errichtungs-Betriebs GmbH, SWH - Strom und Wärme aus Holz" (SWH means Electricity and Heat from Wood), with a wood chip input of 1.5 million cubic meters (m³), clearly demonstrate the low energy yield from moist mixed wood at **487 kWh/m³, a loss of more than 500 kWh per cubic meter** (see SWH homepage: <https://web.archive.org/web/20100625061441/http://www.swh.co.at/unternehmen.html>; from 1.5 million cubic meters of mixed wood, only 730,000 MWh of energy were generated, which is only 487 kWh/m³). The **11 kW unit**, consisting of the **7.2 kW RTS-E40** heat pump and a **3.8 kW fan**, forms the basic setup for a drying area of approximately 40 m². Each individual 11 kW RTS unit dries **110 cubic meters** of moist wood chips **weekly to 100 cubic meters** with **90% dryness** and a usable heat output of approximately **100,000 kWh**, depending on the type of wood. This is more than double of output compared to moist wood chips. The **additional energy gain** from 100 cubic meters with 90% dry matter is therefore approximately **50,000 kWh** of heat per week and per RTS heat pump. In BHPO power plants (**biomass combined heat and power plants with ORC waste heat recovery**), **40% of the electricity** can be generated, which is approximately **20,000 kWh**. Drying, on the other hand, requires only less than **9%** of the electricity from the additional yield, or less than 1,800 kWh, in sunny weather it is only 1,400 kWh per week. The **annual energy yield** is approximately **2.5 GWh per 11 kW unit**, with a total heat output of approximately **5 GWh** (= 5,000,000 kWh) from 5,000 cubic meters wood chips **per RTS-E40 dehumidifier**.

Each RTS-E40 dehumidifier can dry approx. **5,000 cubic meters of wood chips** annually to 90% moisture content, saving the same amount of wood (approx. 5,000 cubic meters of chips = approx. 2,000 cubic meters of tree trunks) while maintaining the same heat output from the heating plant. This results in a reduction of approximately **2,000 tons of CO2 emissions** and makes a significant contribution to **climate protection**. For this substantial CO2 reduction, each RTS dehumidifier is eligible for the greenhouse gas premium (**GHG-premium**) under the European Emissions Trading System (price of CO2 from 2026: € 60 or more).

To achieve 90% dryness, air with less than 52% relative humidity is required in precisely dosed quantities. For the weekly drying of 100 m³ wood chips, approx. 20,000 m³ of air is required per hour for the approx. 40 m² area; only the RTS device combination can achieve this with 11 kW. Other systems require 3-4 times the electricity input for the same amount of wood chips and the same degree of dryness due to inefficient dehumidifiers, inefficient large fans and suboptimal air velocity. - The RTS drying system is field-tested and can be used anywhere.

Die energetische Biomasseoptimierung mit RTS-Trocknungsstationen und integrierter, hocheffizienter RTS-Wärmepumpe

Dampf Wolken über den Heizwerken sind Kennzeichen für die Holzverschwendung und für den vermeidbaren CO₂-Ausstoß und für die Klima-Schädigung !

Das entwässerte Holz in Form von Hackschnitzeln kann auf verschiedene Weise verarbeitet werden (Wärme, Holzdiesel, Gas ...), aber **immer ist eine hochgradige Trockenheit von 90% erforderlich**. Die Entwässerung der Biomasse benötigt einen **hohen Energieeinsatz**. Zur Minimierung des Energieeinsatzes bei der Wasserbeseitigung aus der Biomasse hat die **RTS Trocknungstechnik GmbH** in jahrelanger und intensiver Forschung die hocheffiziente **RTS-Wärmepumpe** mit ihrem **extrem hohen Wirkungsgrad von COP>11** entwickelt. Eine Datenauswertung eines Wärmepumpentests hat den COP>11 bestätigt. Diese RTS-Wärmepumpe kommt beim ebenfalls selbst entwickelten **RTS-Trocknungsverfahren** für Heu und Holz zum Einsatz. Das **RTS-Trocknungsverfahren** reduziert bei der Biomasseentwässerung den Energieeinsatz **radikal** und erreicht eine **90%-Trockenheit** der Biomasse. Solche Biomasse führt zu einer **Verdoppelung der nutzbaren Energie** im Vergleich mit weniger effizienten Trocknungsmethoden, bei **Heu** verdoppelt sich die Milchleistung und bei der Verbrennung von **90%TS-Holz** wird bei gleicher Wärmeproduktion **nur noch die halbe Holzmenge benötigt**. Zugleich wird auch der **CO₂-Ausstoß** bei den Feuchthackgut-Heizwerken **halbiert, und das ist effizienter Klimaschutz**. Die Verwendung von 90%TS-Holz bei den Heizanlagen bewirkt eine **Halbierung** aller vorgelagerten Prozesse: Arbeits- und Maschineneinsatz, Manipulation, Zulieferfahrten, Straßenbelastung, Verkehr, Treibstoffverbrauch, CO₂-Ausstoß etc. mit höchst positiven Auswirkungen auf den **Klimaschutz** ! Zur Schonung der Straßen und zur Vermeidung von Verkehr soll die **Hackschnitzeltrocknung in dezentralen RTS-Trocknungsstationen in den Ernteregionen** gleich nach der Schlägerung stattfinden. In Heiz-Kraftwerken am Rande der Ballungszentren kann die energieoptimierte Biomasse in **Strom- und Wärme** umgewandelt werden. Bei der Verbrennung von vollentwässerten Hackschnitzeln gibt es über den Heizwerken keine Dampf Wolken mehr und die Heizanlage wird von der Umgebung auch nicht mehr wahrgenommen.

Die **RTS-Trocknungstechnik** benötigt für die Entwässerung des Holzes nur noch **15 - 20 kWh je Srm (m³)** Hackgut, dadurch wird die nutzbare Energie verdoppelt. Durch die Trocknung von schlagfrischem Hackgut mit anfänglicher 50%-Feuchte (= 50%TS, TS = Trockensubstanz) auf 10%-Endfeuchte werden große Energieverluste bei der Lagerung und Verbrennung vermieden. Je Srm (m³) werden **mehr als 500 kWh Wärme zusätzlich gewonnen**. Je nach Holzsorte sind **900 - 1.300 kWh Wärme je Srm** nutzbar. Die im Internet veröffentlichten Werte eines der größten österreichischen Bioenergieerzeugers, der **„Heizwerke Errichtungs-Betriebs GmbH, SWH - Strom und Wärme aus Holz“** mit einem Hackguteinsatz von 1,5 Mill. Srm (m³), sind ein klarer Beweis für die geringe Energieausbeute aus feuchtem Mischholz mit nur **487 kWh/Srm (m³)**, Verlust von mehr als 500 kWh je Srm (siehe SWH-Homepage: <https://web.archive.org/web/20100625061441/http://www.swh.co.at/unternehmen.html>; aus 1,5 Mill. Srm Mischholz wurden nur 730.000 MWh Energie erzeugt, das sind nur 487 kWh/Srm). Der 11 kW Gerätesatz, bestehend aus der 7,2 kW RTS-E40-Wärmepumpe und einem 3,8 kW Ventilator, bildet die Basisausstattung für eine ca. 40 m² Trocknungsfläche. Jeder einzelne **11 kW-RTS Gerätesatz trocknet wöchentlich 110 Srm Feuchthackgut zu 100 Srm mit 90% Trockenheit** und einer nutzbaren **Wärme von ca. 100.000 kWh** je nach Holzart, das ist mehr als das Doppelte im Vergleich mit feuchter Ware. Der **Energie-Zusatzgewinn** aus 100 Srm (m³) mit 90%TS beträgt daher wöchentlich ca. **50.000 kWh Wärme** je RTS-Wärmepumpe. In BHDO-Kraftwerken (Biomasse-Heiz-Dampfkraftwerk mit ORC Abwärmeverstromung) können 40% Strom gewonnen werden, das sind ca. 20.000 kWh Strom, die Trocknung benötigt hingegen weniger als 9 % des Stromes aus dem Strom-Zusatzgewinn oder < 1.800 kWh_{el}, bei sonnigem Wetter sind es jedoch nur noch 1.400 kWh_{el} pro Woche. Der jährliche Energiegewinn beträgt **ca. 2,5 GWh je 11 kW Gerätesatz**. Summe der Wärme aus 5.000 Srm (m³): **ca. 5 GWh** (= 5.000.000 kWh).

Jeder RTS-E40 Entfeuchter kann jährlich ca. 5.000 Srm Hackgut auf eine 90%-Trockenheit bringen und gleich viel Holz ca. 5.000 Srm = ca. 2.000 fm) einsparen bei gleicher Wärmebereitstellung des Heizwerkes und dadurch **ca. 2.000 t CO₂ reduzieren** und für den **Klimaschutz** einen beachtlichen Beitrag leisten. Für diese extreme CO₂ Reduktion hat jeder RTS-Entfeuchter Anspruch auf die **THG - Prämie** laut dem europäischen Emissionshandel (Preis je Tonne CO₂ ab 2026: 60 € oder mehr - THG = **Treibhausgas**).

Für die Erreichung der 90%-Trockenheit ist Luft mit < 52% relativer Feuchte erforderlich in genau dosierter Menge. Für die wöchentliche Trocknung von 100 Srm werden stündlich ca. 20.000 m³ Luft für den ca. 40 m² Rost benötigt, das schafft mit 11 kW nur die RTS-Gerätekombination. Andere Systeme benötigen für die gleiche Menge an Holz und den gleichen Trockenheitsgrad den 3 - 4 fachen Stromeinsatz wegen der ineffizienten Entfeuchter, ineffizienten großen Ventilatoren und wegen nicht optimaler Luftsteiggeschwindigkeit.